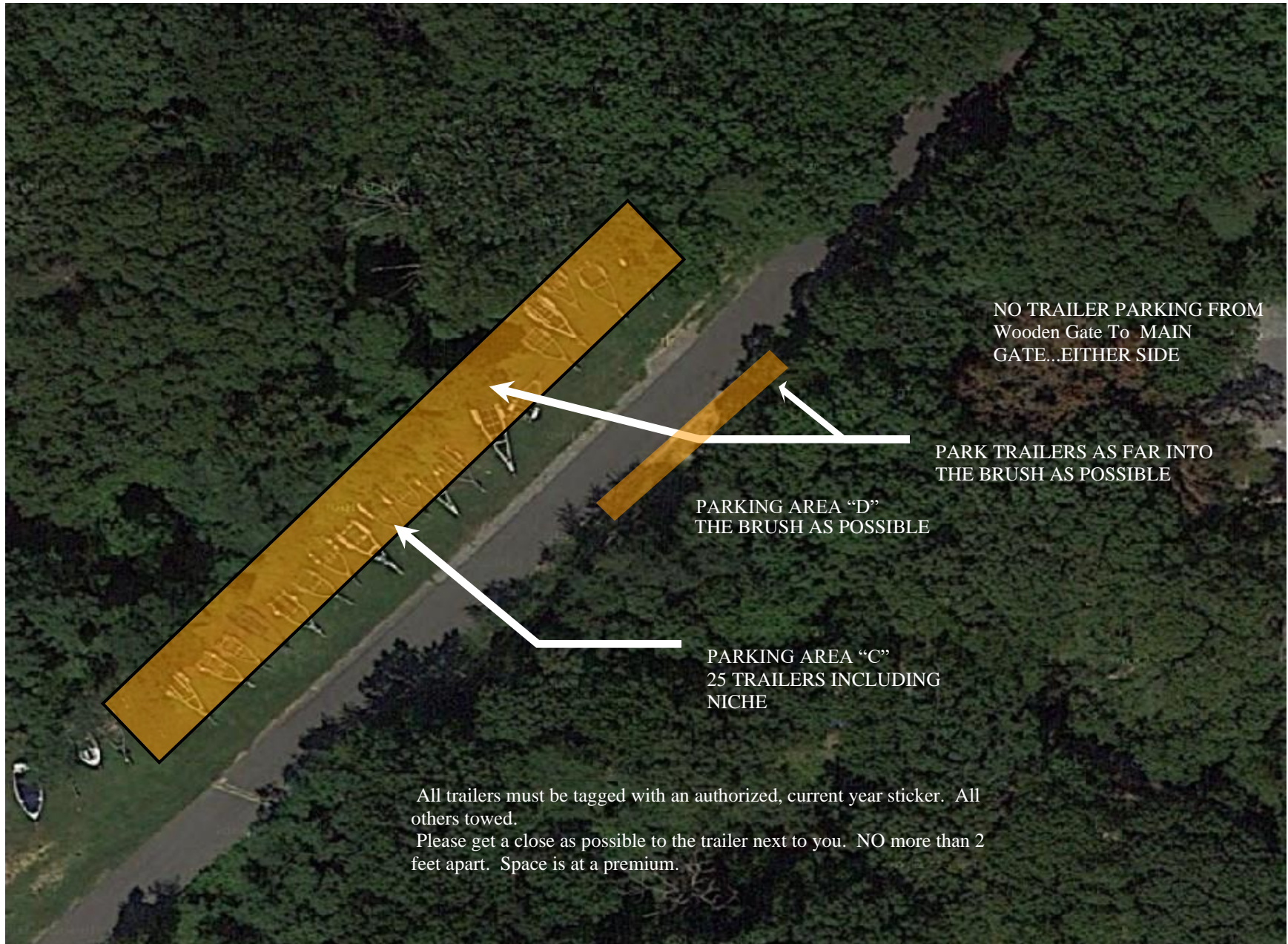
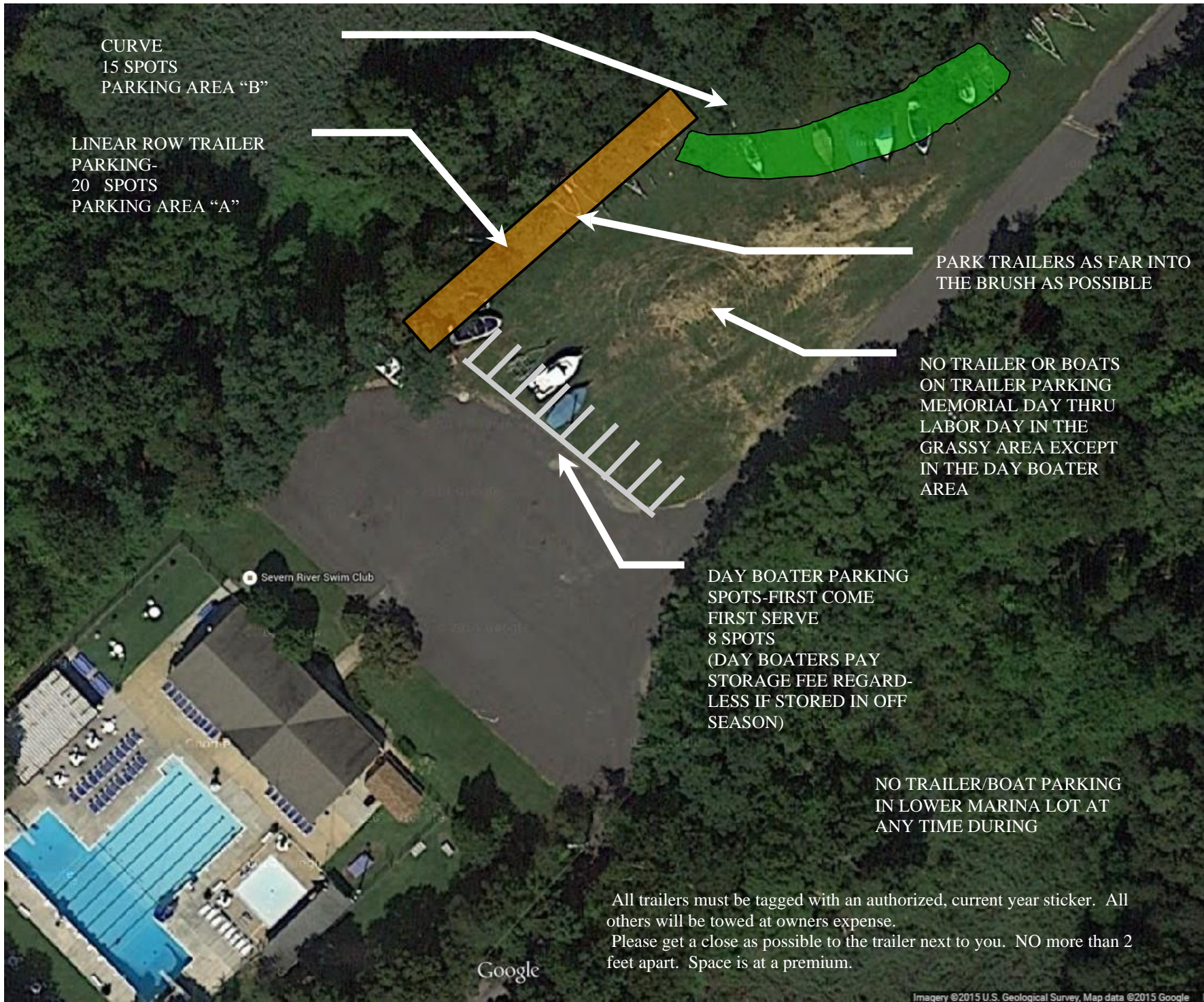


SRSC MARINA TRAILER PARKING GUIDE AND MANAGEMENT PLAN 2019





CURVE
15 SPOTS
PARKING AREA "B"

LINEAR ROW TRAILER
PARKING-
20 SPOTS
PARKING AREA "A"

PARK TRAILERS AS FAR INTO
THE BRUSH AS POSSIBLE

NO TRAILER OR BOATS
ON TRAILER PARKING
MEMORIAL DAY THRU
LABOR DAY IN THE
GRASSY AREA EXCEPT
IN THE DAY BOATER
AREA

DAY BOATER PARKING
SPOTS-FIRST COME
FIRST SERVE
8 SPOTS
(DAY BOATERS PAY
STORAGE FEE REGARD-
LESS IF STORED IN OFF
SEASON)

NO TRAILER/BOAT PARKING
IN LOWER MARINA LOT AT
ANY TIME DURING

All trailers must be tagged with an authorized, current year sticker. All others will be towed at owners expense. Please get a close as possible to the trailer next to you. NO more than 2 feet apart. Space is at a premium.

Severn River Swim Club

Google

Boat/Trailer Usage, Parking and Winter Storage

The grassy field and upper and lower parking lots are not to be used for long term boat storage between May 1 and September 15th. During winter storage, trailers are to be stored in open field and it is encouraged to take up all the lower spots as well as the parking lot spots before parking trailers at the top of the hill (parking area C & D)!

Watercraft trailers may be stored along the property edge ONLY from May 1 through September 15th provided that the trailer is backed into the brush along the field so as not to interfere with parking. Trailer must be backed in and in working order (i.e.; no flat tires, missing wheels or on blocks) to allow moving if required for grounds maintenance.

Any boat and/or trailer stored on swim club property must meet **ALL** of the following criteria:

- a. A **current year marina identification sticker** is affixed to the front of the trailer near the trailer hitch or on the winch upright piece. Please do not affix sticker to the middle or back portion of the trailer. **THE CURRENT YEAR STICKER MUST BE ON THE TRAILER BY MAY 15. ANY TRAILER NOT DISPLAYING CURRENT YEAR STICKER INCLUDING PRIOR YEAR STICKER WILL BE TOWED OFF THE PROPERTY.**
- b. Applicable additional Marina fees are paid by members in good standing.

Members who have hitch locks must provide a key to marina chairman in the event a trailer must be moved. The SRSC will retain a towing management service to strictly conform to the marina rules and regulations set forth.

There are 8 “Day Boater” parking spaces allowed as shown on map posted on website. These spaces are available for day boater parking on a first come, first serve basis.

NO BOATS ON TRAILERS ARE ALLOWED DURING SUMMER SEASON EXCEPT DAY BOATERS (or unless Marina Chairman approves). Boats on Trailers (“Dayboaters”) may only park in designated day boater area, May 1 through September 15.

FINES:

If for any reason trailers or boats on trailers need to be moved, SRSC reserves the right to do so. SRSC will make every effort to contact owners prior to moving them, but reserves the right to do so if required and assess a **\$100** fine for each occurrence and these fees will be an additional assessment to members next year registration.

If owner of a boat or trailer on SRSC property who has not provided current registration, title or insurance information to the SRSC Marina chairman they will be subject to a \$100 fine and or marina privileges revoked. These fees will be an additional assessment to member on their next year’s registration.

If Marina Committee has booted your trailer there is a \$100 fee to remove the boot in addition to the storage fees that are required.

MEMBERS ARE RESPONSIBLE FOR INSURING THAT THEIR TRAILER MEETS ALL REQUIREMENTS LISTED ABOVE OR THE TRAILER WILL BE TOWED OFF THE PROPERTY AND IMPOUNDED AT OWNERS EXPENSE

