

SRSC MARINA TRAILER PARKING GUIDE  
AND MANAGEMENT PLAN  
2015



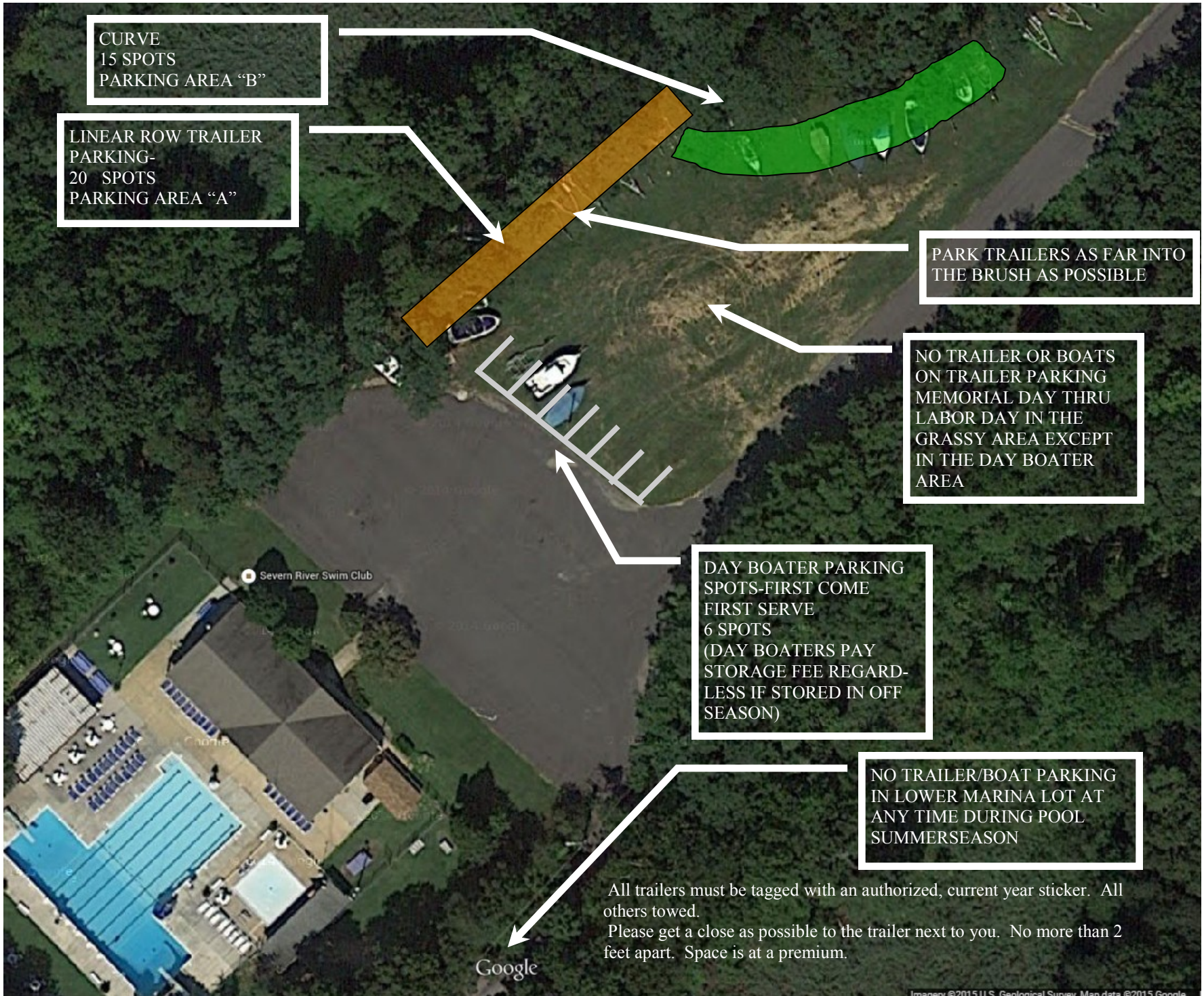
NO TRAILER PARKING FROM THIS POINT UP TO MAIN GATE...EITHER SIDE

PARK TRAILERS AS FAR INTO THE BRUSH AS POSSIBLE

PARKING AREA "C"  
25 TRAILERS INCLUDING NICHE

All trailers must be tagged with an authorized, current year sticker. All others towed. Please get a close as possible to the trailer next to you. No more than 2 feet apart. Space is at a premium.





CURVE  
15 SPOTS  
PARKING AREA "B"

LINEAR ROW TRAILER  
PARKING-  
20 SPOTS  
PARKING AREA "A"

PARK TRAILERS AS FAR INTO  
THE BRUSH AS POSSIBLE

NO TRAILER OR BOATS  
ON TRAILER PARKING  
MEMORIAL DAY THRU  
LABOR DAY IN THE  
GRASSY AREA EXCEPT  
IN THE DAY BOATER  
AREA

DAY BOATER PARKING  
SPOTS-FIRST COME  
FIRST SERVE  
6 SPOTS  
(DAY BOATERS PAY  
STORAGE FEE REGARD-  
LESS IF STORED IN OFF  
SEASON)

NO TRAILER/BOAT PARKING  
IN LOWER MARINA LOT AT  
ANY TIME DURING POOL  
SUMMERSEASON

All trailers must be tagged with an authorized, current year sticker. All others towed.  
Please get a close as possible to the trailer next to you. No more than 2 feet apart. Space is at a premium.

Google

## **Boat/Trailer Usage, Parking and Winter Storage**

The grassy field and upper and lower parking lots are not to be used for long term boat storage between June 1 and September 15th.

Watercraft trailers may be stored along the property edge ONLY from May 1 through September 15th provided that the trailer is backed into the brush along the field so as not to interfere with parking.. Trailer must be backed in to allow moving if required for grounds maintenance.

Any boat and/or trailer stored on swim club property must meet **ALL** of the following criteria:

a. A **current year marina identification sticker** is affixed to the front of the trailer near the trailer hitch or on the winch upright piece. Please do not affix sticker to the middle or back portion of the trailer. **THE CURRENT YEAR STICKER MUST BE ON THE TRAILER BY MAY 15. ANY TRAILER NOT DISPLAYING CURRENT YEAR STICKER INCLUDING PRIOR YEAR STICKER WILL BE TOWED OFF THE PROPERTY.**

b. Applicable additional Marina fees are paid by members in good standing.

MUST be able to be moved. Ie; no flat tires, missing wheels or on blocks. (this allows grounds maintenance)

Trailer storage is on an assigned designated area only. Trailers not within their assigned designated storage area will be immediately towed off the property.

There are 6 “Day Boater” parking spaces allowed as shown on map posted on website. These spaces are available for day boater parking on a first come, first serve basis.

**NO BOATS ON TRAILERS ARE ALLOWED DURING SUMMER SEASON EXCEPT DAY BOATERS.** Boats on Trailers (“Dayboaters”) may only park in designated day boater area, May 1 through September 15.

If for any reason trailers or boats on trailers to be moved, SRSC reserves the right to do so. SRSC will make every effort to contact owners that need to move their trailer and/or boat on trailer, but reserves the right to do so if required.

Members who have hitch locks must provide a key to marina chairman in the event a trailer must be moved.

The SRSC will retain a towing manager and service to strictly conform to the marina rules and regulations set forth.

**MEMBERS ARE RESPONSIBLE FOR INSURING THAT THEIR TRAILER MEETS ALL REQUIREMENTS LISTED ABOVE OR THE TRAILER WILL BE TOWED OFF THE PROPERTY AND IMPOUNDED AT OWNERS EXPENSE**